

# Sample Traffic Control Plan (TCP)

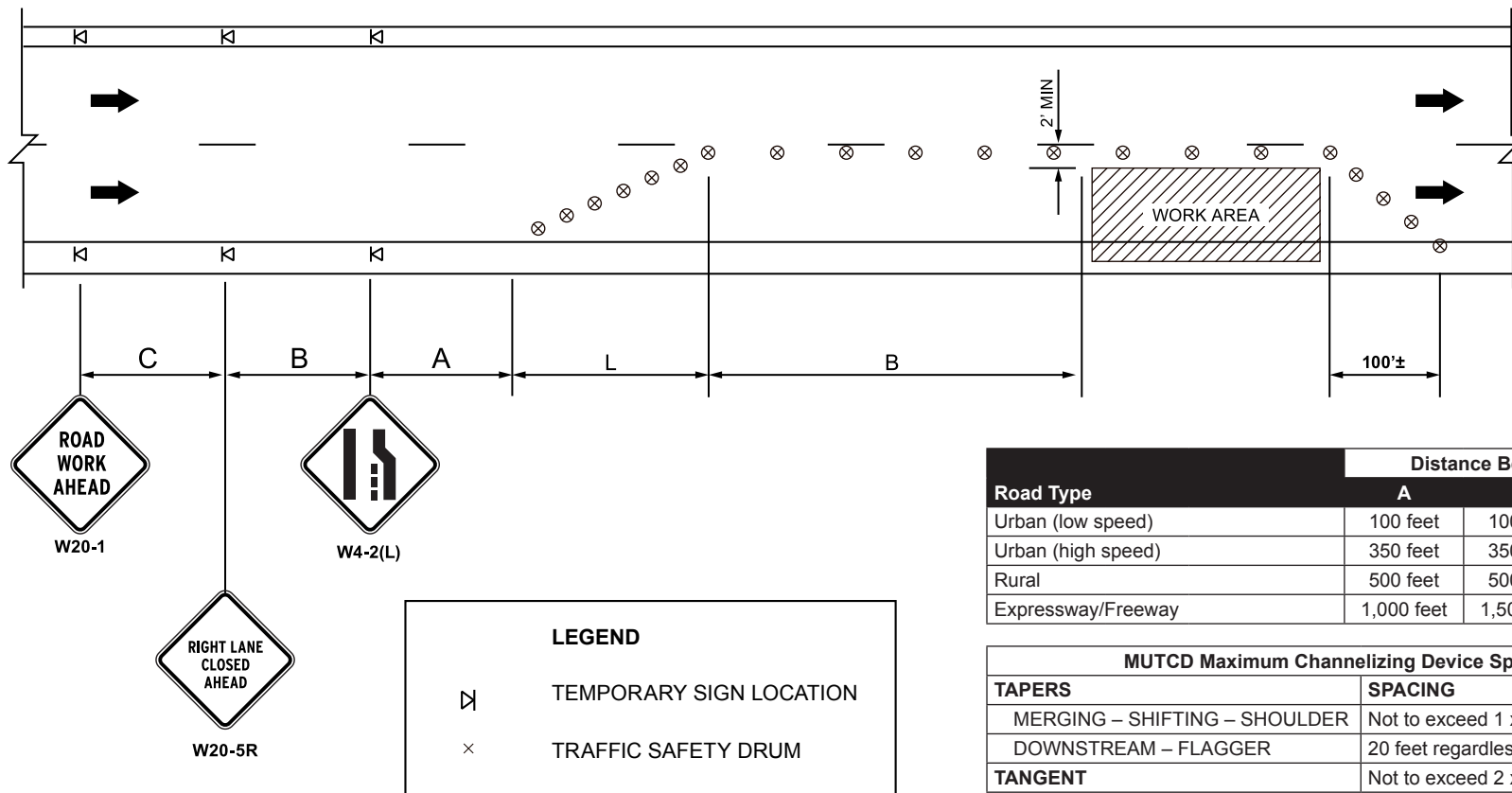
Note: This document is for training purposes only



Minimum Lane Closure Taper Length = L (Feet)											
Lane Width (feet)	Posted Speed MPH										
	25	30	35	40	45	50	55	60	65	70	75
10'	105	150	205	270	450	500	550	600	650	700	750
11'	115	165	225	295	495	550	605	660	715	770	825
12'	125	180	245	320	540	600	660	720	780	840	900

Minimum Shoulder Taper Length = 1/3 L (Feet)											
Lane Width (feet)	Posted Speed MPH										
	25	30	35	40	45	50	55	60	65	70	75
8'	30	40	55	75	120	135	150	160	175	190	200
10'	35	50	70	90	150	170	185	200	220	235	250

Use a minimum of 3 devices in shoulder tapers less than 8 feet.



Road Type	Distance Between Signs		
	A	B	C
Urban (low speed)	100 feet	100 feet	100 feet
Urban (high speed)	350 feet	350 feet	350 feet
Rural	500 feet	500 feet	500 feet
Expressway/Freeway	1,000 feet	1,500 feet	2,640 feet

MUTCD Maximum Channelizing Device Spacing	
TAPERS	SPACING
MERGING – SHIFTING – SHOULDER	Not to exceed 1 x speed limit in feet
DOWNSTREAM – FLAGGER	20 feet regardless of speed limit
TANGENT	Not to exceed 2 x speed limit in feet

**Notes**

1. Extend device taper at 1/3 L across shoulder
2. Devices shall not encroach into the adjacent lane
3. Device spacing for the downstream taper shall be 20' (FT)
4. All signs are black on orange

Buffer Data											
Longitudinal Buffer Space = B											
Speed (MPH)	25	30	35	40	45	50	55	60	65	70	75
Length (ft)	155	200	250	305	360	425	495	570	645	730	820